

Love your home

The American DREAM

East Coast American charm blends with industrial chic in this converted workshop



The workshop that inspired Amy's New England style

The sunsets here are unlike anything I've seen,' says Amy Maynard of the big skies over Appledore in Kent, where she lives with her husband, Charlie, and their two children. As the historic village lies on the edge of the Romney Marsh – a large area of coastal wetland, dotted with sheep and ancient churches – there is plenty of wide-open space for the sun to put on a spectacular display.

Amy grew up in nearby Winchelsea, a hilltop town in East Sussex. During her years working in London as a journalist, she always knew that she would return to her rural roots. 'The countryside is in my blood,' she says. 'I did love London, but I knew my heart was down here.'

After meeting Charlie, also a journalist, and having children, her desire to move became even more urgent. To finance their lifestyle change, Amy and Charlie looked for a family home with an outbuilding they could convert and run as a holiday let. They viewed just two properties near Amy's parents' home,



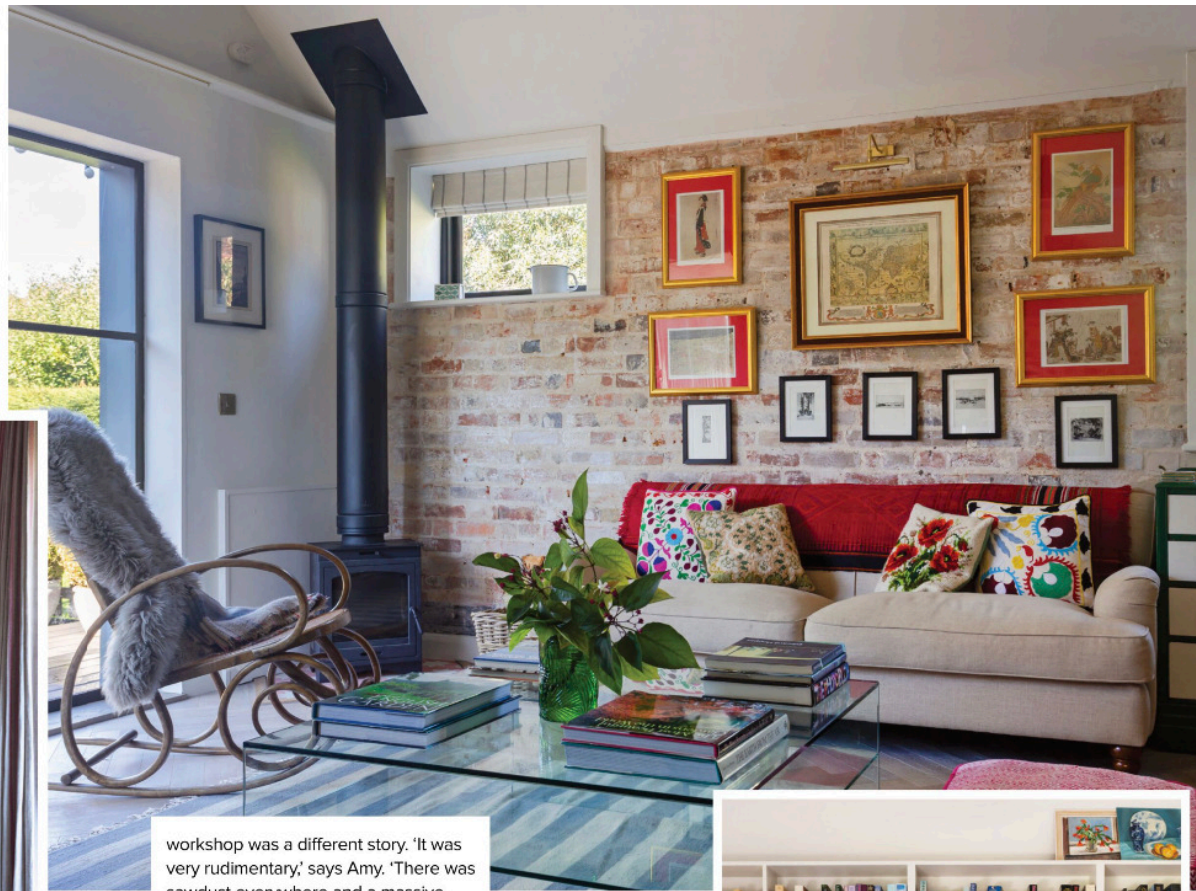
MODERN RUSTIC
The only remnants of the original workshop are the exposed brick walls in the kitchen. The table was a charity-shop find; the chairs came from Ardingly Antiques & Collectors Fair.

and the second – an 18th-century former village store, with four bedrooms and an Arts and Crafts frontage – seemed to have exactly what they wanted. But what really clinched the deal was a shiplap-clad carpenter's workshop in the garden and an orchard leading to open fields.

The house needed only a fresh coat of paint to make it theirs. However, the



COUNTRY FAMILY Amy with children Lottie and Theo, stand under an apple tree in their garden in Appledore, Kent.



workshop was a different story. 'It was very rudimentary,' says Amy. 'There was sawdust everywhere and a massive crack in the back wall.'

The architect Rob Pollard (now of RX Architects) was recommended, and planning permission was granted for a single-storey bolthole. Alongside builder Ryan Blake, Amy project-managed the build. From the outset, she had clear ideas about how The Outbuilding should look; its cedar-clad exterior inspired by New England vernacular architecture and the decorative feel inside nodding to a New York loft aesthetic.

The original workshop was almost completely taken down, save for two brick walls, around which everything else took shape. These now form the textural backdrop for the open-plan living space, and the industrial feel is carried through to the steel-framed doors, which open out on to the decked terrace. 'They were the most expensive thing,' Amy smiles. 'I wanted it to feel rustic but luxurious.'

In the kitchen area, above cupboards painted in Farrow & Ball's Railings and ➔

GALLERY WALL

On the exposed brick wall, Amy grouped a series of pen-and-ink drawings and Japanese illustrations, both sourced from Rye Old Books, around an antique-style map. The woodburning stove is by Helios (stovesareus.co.uk), while the rocking chair was sourced locally through Gumtree. The fabric for the blinds came from Ada & Ina.

ON THE SHELF

For a homely feel, Amy filled the bespoke shelves, made by carpenter Stuart Manger, with books for guests to read. The desk below, along with two small chairs from Ardingly Antiques & Collectors Fair, are ideal for children. The clear glass coffee table lets the striped rug from Namaste show through.

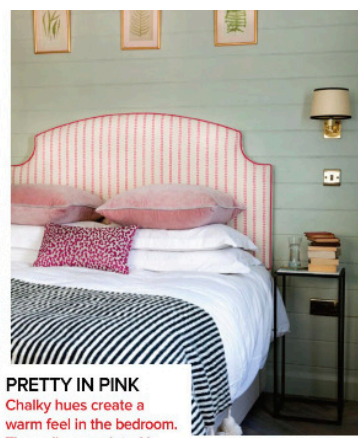


Love your home



LUXURY BATHING

The Matki shower screen mirrors the style of the steel-framed windows elsewhere. The screen and Vado shower fittings came from WC1 Bathrooms. The tiles add colour and pattern: the green tiles came from Bert & May; the herringbone tiles and hexagonal floor tiles (above) both came from Tiles Direct.



PRETTY IN PINK

Chalky hues create a warm feel in the bedroom. The walls are painted in Cromarty by Farrow & Ball and the headboard is covered in a ticking fabric by Vanessa Arbuthnott.



GET THE LOOK



Smycka artificial bouquet, £13, Ikea



Bowls, £18 for a set of 4, Joe Browns



Gashgai rug, £199, Ikea



Vase, £32, Beaumonde



Gluggle jug, £27, Oliver Bonas



Print, from £15, Abstract House



Recycled cotton throw, £18, Walton & Co

Serving board, £20, Cath Kidston

Gower sofa in Duck Egg, £1,199, Country Living collection at DFS

topped with pale quartz, colourful ceramics, glass and enamelware line the open shelving. Mismatched embroidered cushions dress the sofa and a rocking chair sits beside the woodburner. 'I wanted it to feel like a home from home,' says Amy. Other quirky, homely touches include custom-built bunk beds in the corridor. Inspired by sleeper cabins on ships and trains, they give children a playful sleeping zone to make their own. A black-framed, smaller window was installed between the main bedroom and living area, which opens up the layout, flooding it with light.

By spending money on key pieces, such as the windows, engineered oak parquet flooring and sleek shower fittings, Amy achieved the look she wanted. She also reduced costs by sourcing pieces from antiques markets, charity shops and eBay. The roll-top bath is a favourite find: 'We discovered it on a local forum; it was rusting away in someone's garden and was full of spiders!' says Amy. Now re-enamelled by Faversham-based The Bath Doctor, and painted in Little Greene's Light Peachblossom, it is a focal point for the romantic and timeless scheme.

The family have immersed themselves in the local area. 'We love Camber Sands and Rye; there's so much for kids to do,' says Amy. And she has reconnected with the landscape of her childhood in an entirely new way. 'I used to take it for granted,' she says, 'but the countryside here is really uplifting, and I now have the chance as an adult to fully appreciate it.'

• *The Outbuilding sleeps up to 4; visit theoutbuildingapplefordore.com*

Words Alex Reece Photography Richard Gadsby Production Ben Kendrick Get The Look compiled by Tilly Nathan

Enjoy a luxury break on board the Regal Princess



Set sail ON A seacation!

Want a safe and affordable way to holiday this summer? Then hop on board...

Imagine lying on a sun lounger, a cool drink in your hand and glorious blue sea stretching to the far horizon. It sounds the stuff of dreams, doesn't it? And with so many of us desperate to get away this summer, one cruise liner has come up with the perfect solution. The all-new seacation! Its name says it all – it's a staycation at sea.

Join the Regal Princess for one of its three- or four-night Scenic Summer Seacation cruises and you will have the perfect relaxing break, with full-board dining, entertainment and a premium drinks package included!

And best of all, your short round-trip cruise couldn't be safer. There are no port stops and all guests must have had both vaccinations at least seven days prior to setting off. So all you have to do is sit back, relax and enjoy your holiday at sea with its panoramic views and gorgeous sunsets.

The Regal Princess will depart on a round-trip from Southampton, where it will be joined this summer by sister ship,

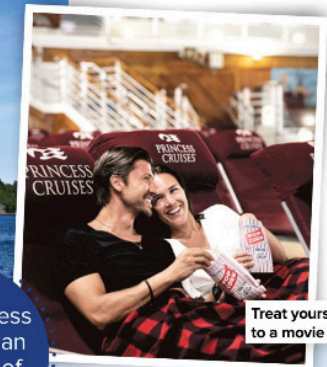
Sky Princess. Guests have the use of the ship's exclusive OceanMedallion technology, a small medallion-shaped wearable device that enables everything from contactless payments, staggered boarding and even helps you locate your guest on the ship. Or simply use it to book ahead to avoid queues or order a cocktail from the comfort of your sun lounger. With the ship boasting the 'best wi-fi at sea' this unique technology will make your time on the ship truly hassle-free.

Your holiday starts from the moment you step on board. The Regal Princess has a wide variety of entertainment facilities, including a theatre, gym, fabulous shops, a golf driving range, freshwater pools, a library and a first-class spa, offering the very best in relaxing treatments. Food will be a key part of your cruise

Food will be a key part of your cruise

The ship has 19 decks and a glass walkway over the sea.

The Regal Princess is longer than the height of the Eiffel Tower!



Treat yourself to a movie night



Dine on your balcony and take in the view

experience. The Regal Princess boasts a fantastic fine-dining experience, the World Fresh Marketplace, with its ever-changing buffet menu, and the 24-hour International Café, plus many more speciality restaurants, cafes and bars. Alternatively, enjoy the ultimate balcony dining in the privacy of your own cabin.

Even more incredibly, prices start at just £389pp for the three-night cruise; with food, drink and entertainment included, that works out far cheaper than many other UK breaks.

Finally, to give you that extra peace of mind, Princess Cruises has a 'Book with Confidence' policy so you can cancel up to 30 days before departure and get cancellation fees paid as a future cruise credit*. Final payment date has been reduced to 60 days** beforehand.

For more information about these incredible seacations, visit princess.com.

TURN THE PAGE TO WIN A SEACATION CRUISE...